



Advanced Heating
& Hot Water Systems

High Efficiency Residential & Commercial Heating

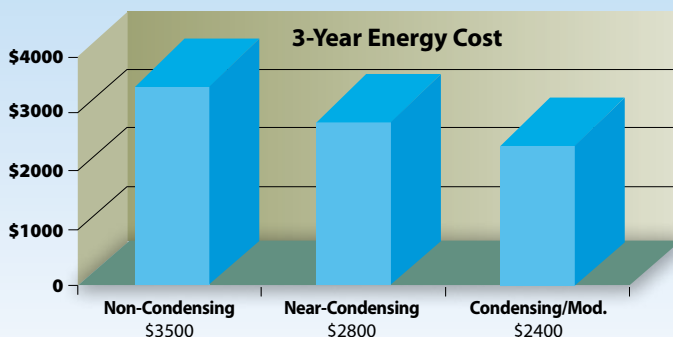


A Product For Every Heating Need



APPLICATION	Mod Con	Elite	Pioneer	MC Series	Versa-Hydro	Phoenix
RADIANT FLOOR	X	X	X	X	X	
FAN COIL	X	X	X	X	X	X
BASE BOARD	Max 180°temp	Max 180°temp	Max 180° temp	Max 180° temp	Max 160° temp	
SNOW MELT	X	X	X	X		
HEATING & DHW	w/ Indirect Tank or VWH	w/ Indirect Tank or VWH	w/ Indirect Tank	w/ Indirect Tank	X	X
COMBINED HEATING / DHW					X	
SOLAR VERSIONS					X	X
POOL HEATER	w/ Indirect Tank	w/ Indirect Tank	w/ Indirect Tank	w/ Indirect Tank		
HIGH TEMP. SANITATION						X
ASME	X	X				
CO-GENERATION HEAT RECOVERY					X	X
Domestic Hot Water	VWH	VWH			X	X
Primary Secondary Piping Required – Retro Fit	No	No	Yes	No	Max 160° temp	No
Integrated Buffer Tank – Hydronic Stabilization	No	No	Yes	No	Yes	Yes

Cost of Operation



Condensing Technology

The cost of fuel continues to rise! HTP high efficiency modulating gas boilers provide a maximum payback on fuel savings. Savings can result in payback periods of less than 3 years. Depending on the age of your present equipment, our products could save you as much as 50% on your fuel bills.

Phoenix

Stainless Steel, Gas fired, Commercial Water Heater



- Up to 96% Thermal efficiency
- 3 to 1 turndown ratio
- The tank loses only ½° F per hour, thanks to 2" of environmentally safe foam insulation
- Virtually maintenance free
- System flexibility: built in auxiliary taps provide connections to air handlers or supplemental storage tanks
- Quality construction: an extremely durable cupronickel and stainless steel heat exchanger boasts excellent heat transfer properties and resists corrosion
- Robust 316L stainless steel tank eliminates the need for anode rods
- Vents in inexpensive, easy to install PVC or CPVC pipe, with vent lines up to 85 feet total equivalent length
- Eligible for tax credits and utility company rebates

Phoenix Model	Input Modulation	GAL.	First Hr. Rating	100° Rise	Thermal Efficiency
PH199-119	66,000-199,000	119	335 gal	230	96.1%
PH130-119	44,000-130,000	119	257 gal	152	96.1%
PH100-119	44,000-100,000	119	214 gal	117	96.3%
PH199-80	66,000-199,000	80	314 gal	229	94.8%
PH130-80	44,000-130,000	80	227 gal	150	95.4%
PH100-80	44,000-100,000	80	189 gal	116	95.8%
PH199-55	66,000-199,000	55	295 gal	229	95.0%
PH130-55	44,000-130,000	55	205 gal	148	93.7%
PH100-55	44,000-100,000	55	169 gal	115	94.8%

Phoenix Applications: • Fan coil • DHW • Solar version • Sanitation (Models: PH-130/199) • Retro fit • Co-generation heat recovery • Buffer tank

Combined Hydronic Applications

Versa-Hydro

Space Heating & Domestic Hot Water Combined

- The modulating burner operates at a 3 to 1 turndown ratio, while the space heating module operates at a 10 to 1 turndown ratio
- Low energy costs resulting from ultra high 96% thermal efficiency and 93% combustion efficiency ratings
- The tank loses only ½ ° F per hour when the burner is off
- Virtually maintenance free operation
- Incredible system flexibility: Built-in auxiliary taps provide connections to air handlers or supplemental storage tanks
- The Versa-Hydro saves space by combining the equivalent of a 135,000 BTU boiler, an indirect water heater, and a buffer tank into one small footprint
- An extremely durable cupronickel and stainless steel heat exchanger boasts excellent heat transfer properties and resists corrosion
- 12 year limited warranty

Versa-Hydro Model	GAL.	BTU'S	SPACE HEATING MODULE BTU'S	MAXIMUM SPACE HEATER TEMP.
PHE130-55 / PHE199-55	55	130,000	100,000	160°
		199,000	135,000	
PHE130-80 / PHE199-80	80	130,000	100,000	160°
		199,000	135,000	
PHE130-119 / PHE199-119	119	130,000	100,000	160°
		199,000	135,000	



Versa-Hydro Applications: • Radiant floor • Fan coil • Baseboard • Combined Heating & DHW • Solar version • Co-gen. heat recovery • Retro fit • Buffer tank

MOD CON



Mod Con Model	BTU / Input Range	Gross Output BTU / hr	Net I=B=R BTU / hr	Thermal Efficiency
Mod Con 300	60,000-301,000	283,000	245,000	94.0
Mod Con 500	100,000-500,000	470,000	409,000	94.0
Mod Con 850	170,000-850,000	799,000	695,000	94.0

Comercial Boiler

- Ultra high 94% thermal efficiency rating
- 316L stainless steel construction heat exchanger
- Vents up to 200 ft. in PVC, CPVC, or stainless steel.
- Cascading capability: up to 8 boilers - increased turndown ratios, built-in redundancy, and a total heating capacity of up to 6,800,000 BTUs.
- Numeric control panel and USB connection allows boiler history to be displayed on a computer
- Removable front cover, easy to service.
- Modulating burner with 5 to 1 turndown ratio.

Mod Con Applications: • Radiant floor • Fan coil • Base board • Snow melt • DHW (w/ indirect tank or VWH) • Pool heater (w/ Indirect tank) • DHW (VWH) • ASME

Elite

Heating Boiler

Best In Class Boiler Up To 98% AFUE



- 5 to 1 turndown ratio
- Vents in inexpensive, easy-to-install PVC pipe, up to 200 equivalent feet
- Energy Star rated: eligible for tax credits and utility company rebates (excludes EL-399)
- State of the art control interface: a 2-line 20-character LCD control interface: Total System Control
- 316L stainless steel heat exchanger
- Impressive range: six models, ranging from 80,000 to 399,000 BTUs
- Floor or wall mount
- 12 year limited warranty

Elite Model	BTU / Input Range	AFUE
EL-80	16,000-80,000	94.4
EL-110	22,000-110,000	94.0
EL-150	30,000-150,000	94.0
EL-220	44,000-220,000	98.0
EL-299	60,000-299,000	96.0
EL-399	80,000-399,000	96.0*

* Thermal Efficiency

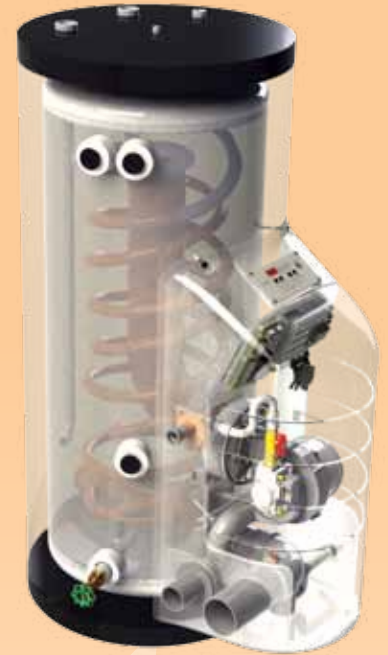


Elite Applications: • Radiant floor • Fan coil • Base board • Snow melt • DHW (w/ Indirect tank or VWH) • Pool heater (w/ Indirect tank) • DHW (VWH) • ASME

Pioneer Model	BTU / Input Range
PHR-100-55	33,000-100,000
PHR-130-55	44,000-130,000
PHR-160-55	53,000-160,000
PHR-199-55	66,000-199,000

Pioneer

- Modulation provides a 3 to 1 turndown ratio
- Thermal mass in the stainless steel tank provides a buffer against cycling during low load conditions
- Low maintenance design
- Single loop installation: The heat exchanger, constantly surrounded by water, is protected against "flashing" due to low flow conditions
- Up to 95% thermal efficiency
- With ample thermal mass, ideal for replacement boilers, minimizing the change to piping, no secondary piping needed
- Many Venting options including PVC and room air intake
- 12 year limited Warranty



Pioneer Applications: • Radiant floor • Fan coil • Base board • Snow melt • DHW (w/ Indirect tank) • Pool heater (w/ Indirect tank) • Retro fit • Buffer tank

Fighting the High Cost of Heating

MC Series

- Modulation provides a 3 to 1 turndown ratio
- Energy Star rated
- LED display system operation
- Inlet and outlet temperature sensors
- Up to .95 energy factor
- Low gas pressure operation
- Natural to LP gas conversion
- Inlet and outlet temperature sensors
- Wall hung with all mechanical connections on bottom of unit: eases installation and serviceability.
- Stainless steel heat exchanger for higher corrosion resistance
- Terminal strip for ease of field wiring
- Lightweight, durable composite construction
- Vents with 2" schedule 40 PVC pipe
- 12 Year limited warranty

MC Series Model	BTU / Input Range
MC50	18,000-50,000
MC80	19,000-80,000
MC99	44,000-99,000
MC120	44,000-120,000



MC Series Applications: • Radiant floor • Fan coil • Base board • DHW (w/ indirect tank) • Pool heater (w/ Indirect tank)

SUPERstor ULTRA

Stainless Steel, Indirect Water Heaters

HTP enjoys market leadership for Indirect Water Heaters. The SuperStor brand is the most recognized in the industry. Our company uses the best quality components to make products that last a lifetime. Our indirect water heater tanks are made from robust 316L stainless steel and our heat exchangers are made from finned cupronickel for long life and abundant hot water.

- Low energy costs: when used in conjunction with an HTP high efficiency boiler, operating costs decrease even further
- Appropriate for both residential and commercial applications available in seven sizes (ranging from 20 to 119 gallons)
- The tank has minimal heat loss, thanks to 2" of environmentally safe water blown foam insulation
- Virtually maintenance free operation
- Extremely durable cupronickel heat exchanger boasts excellent heat transfer properties and resists corrosion
- Robust 316L stainless steel tank eliminates the need for anode rods
- Limited lifetime warranty: covered by the industry's strongest protection plan
- Number one selling indirect water heater in the country



Market Leadership

SuperStor Contender Indirect Water Heater

The SuperStor Contender Glass-Lined Water Heater is engineered with high performance standards at a value price. Each unit is slush coat glass lined, not sprayed, with high insulation standards and maintenance free operation for many years.

Our smooth surface, ceramic coated, coil design will resist lime build up, which would reduce the performance of the heater over its service life. Our plastic outer jacket will maintain its appearance without rusting. The extra thick impact resistant insulation, will save wasted energy normally lost by conventional fiberglass insulation. *7 year limited warranty.*



www.htproducts.com (Checkout Our Movies Online)